



transmatic

## Heat Seal Machines



TS 3M

# TS 3M

<b>I</b>	Dimensione piastra	50x40 cm
	Tensione alimentazione	230 V monofase
	Potenza max.	KW 2,2
	Consumo	KW/h 1,0
	Temperatura	50°-305° C
	Tempo regolabile	0-999 sec.
	Pressione	0-600 gr/cm <sup>2</sup>
	Peso netto	Kg 67

Pressa a caldo a funzionamento manuale con apertura laterale. Piastra termica superiore basculante per ottenere una pressione costante tra le due piastre. Regolazione elettronica del tempo e temperatura. La piastra inferiore è intercambiabile. Possibilità di accessorio per berretti in opzione.

<b>UK</b>	Dimension of the plate	50x40 cm
	Current	230 V mon.
	Power consumption	KW 2,2
	Power consumption/h	KW/h 1,0
	Temperature	50°-305° C
	Time regulable	0-999 sec.
	Pressure	0-600 gr/cm <sup>2</sup>
	Net weight	Kg 67

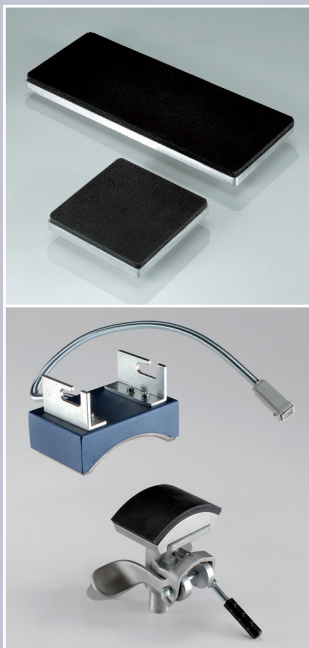
Manual heat press with lateral opening. The top plate is not fixed in a rigid manner to ensure an homogenous pressure between the upper plate and the bottom plate. Electronic time and temperature regulation. Exchangeable under plate with rapid screw fitting. Suitable for any type of application. Possibility to have the cap accessory as extra option.

<b>D</b>	Plattengroesse	50x40 cm
	Spannung	230 V mon.
	Verbrauch	KW 2,2
	Verbrauch/h	KW/h 1,0
	Temperatur	50°-305° C
	Zeiteinstellung	0-999 sec.
	Anpressdruck	0-600 gr/cm <sup>2</sup>
	Gewicht netto	Kg 67

Manuelle Thermopresse mit neuem Hebelsystem. Freihängendes Oberplatte für eine immer homogene Druckleistung. Einfache Druckregulierung auf dem Haupthebel. Geeignet zur Applikation jeder Art Etiketten. Zubehör für Kappendruck. Seitlicher Öffnung.

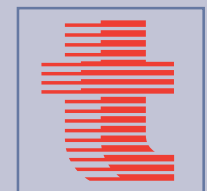
<b>F</b>	Dimension de la plaque	50x40 cm
	Voltage	230 V mon.
	Consommation totale	KW 2,2
	Consommation totale/h	KW/h 1,0
	Température	50°-305° C
	Régulation du temps	0-999 sec.
	Pression	0-600 gr/cm <sup>2</sup>
	Poids net	Kg 67

Presse à chaud manuelle. Plaque supérieure basculante qui permet d'avoir une pression constante. Régulation électronique du temps et de la température. La plaque inférieure est interchangeable. Adapte pour l'application de tous types d'étiquettes à chaud. Ouverture laterale. Possibilité d'avoir l'accessoire pour les casquettes en options.



I dati e le caratteristiche tecniche sono puramente indicativi e soggetti a variazioni senza obbligo di preavviso.

*All data and technical features are purely indicative and subject to changes without prior notice.*



**transmatic** s.r.l.

Via Enzo Ferrari, 9/11/13  
20824 Lazzate (MB) - ITALY  
Tel. +39 02 96329816 - +39 02 96329024  
Fax: +39 02 96728422  
e-mail: info@transmaticsr.com  
web: www.transmaticsr.com